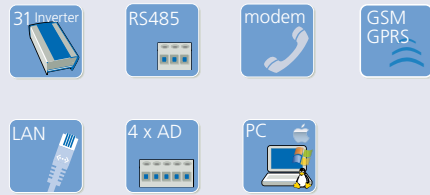
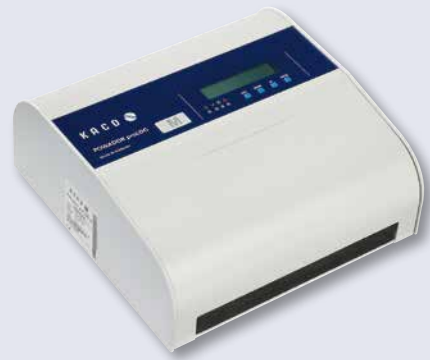


# Powador-proLOG.

The professional data logger for every application.



The Powador-proLOG is a data logger that provides extensive options for local and remote monitoring on the PC. It records the currents, voltages, temperatures, power outputs and yields of every individual inverter. External sensors can also be connected to it. The stored system data is transmitted every day to an e-mail address of your choice as a text file. The data logger also automatically reports by e-mail, fax or SMS if the system exits the operating states specified by the user. The alarm parameters can be customised to fit the technical properties of the system perfectly.

The current measured values can be viewed at any time via the PC. They can be viewed using either the free Powador-monitor software, which enables you to graphically display system data, or the Powador-web Internet portal, which enables you to access system data from anywhere around the world. The Powador-web provides the user with extensive data on the past and current performance of the PV system and offers the option of using alarm notification.

### Powador-proLOG S

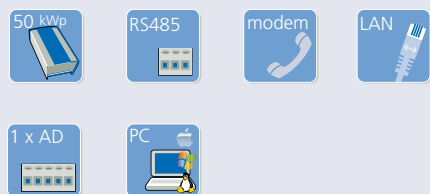
- For systems of up to max. 50 kWp

### Powador-proLOG M | XL

- Max. 31 Powador inverters

### Highlights

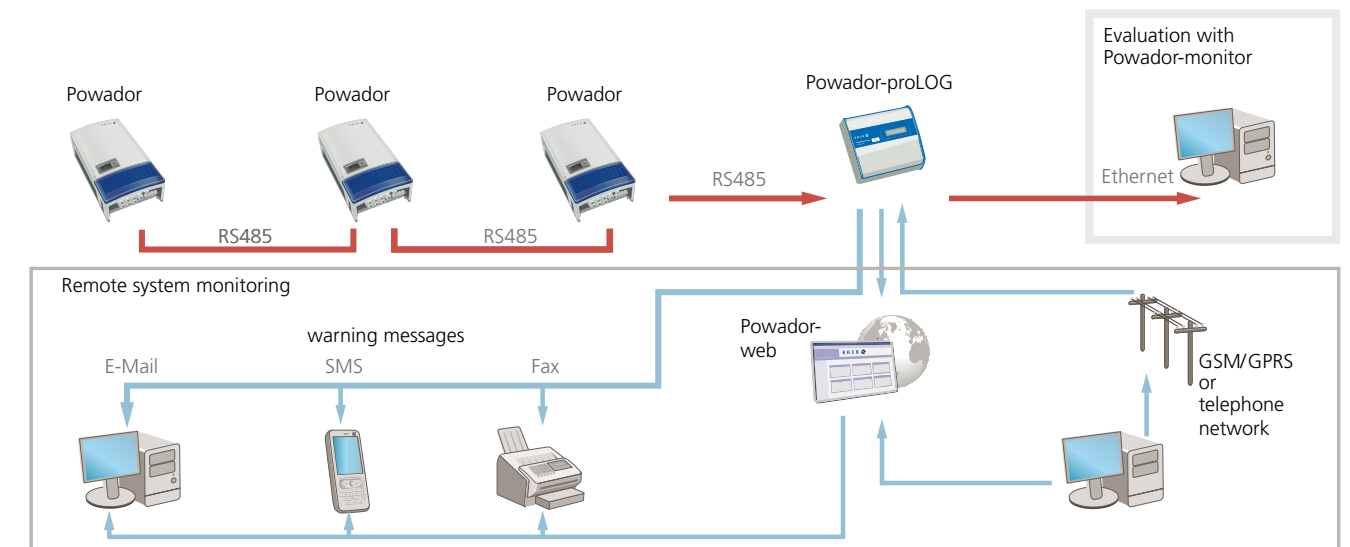
- All units with Ethernet, RS485 and display
- Configuration via web browser
- Independent of operating system
- Installation wizard
- Saving interval: 5-60 minutes
- 128 MB data storage/ ring buffer 1 year
- Data transmission via e-mail
- Display of measured data (text)
- Graphical display with Powador-monitor
- Graphical display and alarm notification with Powador-web (optional)



Electrical data	Powador-proLOG S	Powador-proLOG M   XL
<b>Input levels</b>		
Power supply	230 V / 50 Hz	230 V / 50 Hz
Max. power consumption	7.5 W	9.0 W
Analogue inputs (configurable)	0 V to 10 V 0 mA to 20 mA PT 1000 resistance measurement	0 V to 10 V 0 mA to 20 mA PT 1000 resistance measurement
Digital inputs	low = 0 V to 7 V high = 9 V to 24 V	low = 0 V to 7 V high = 9 V to 24 V
<b>Output levels</b>		
Digital SO output	70 V/50 mA (optocoupler)	70 V/50 mA (optocoupler)
Internal battery (internal clock)	Lithium cell/type Li2032	Lithium cell/type Li2032
<b>Mechanical data</b>		
H x W x D	110 x 160 x 63 mm	217 x 220 x 87 mm
Mounting	Top hat rail/wall	Wall
Protection class	IP20	IP21
Weight	436 g	900 g
<b>Ambient temperature</b>		
Operation	0 °C to +55 °C	0 °C to +55 °C
Storage and shipment	-22 °C to +65 °C	-22 °C to +65 °C

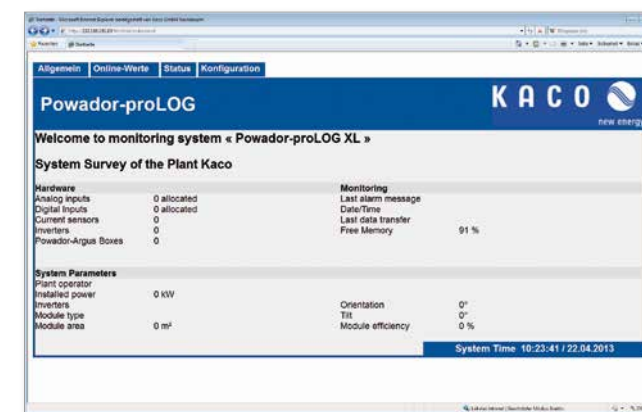
# Powador-proLOG.

Functional diagram for system monitoring.

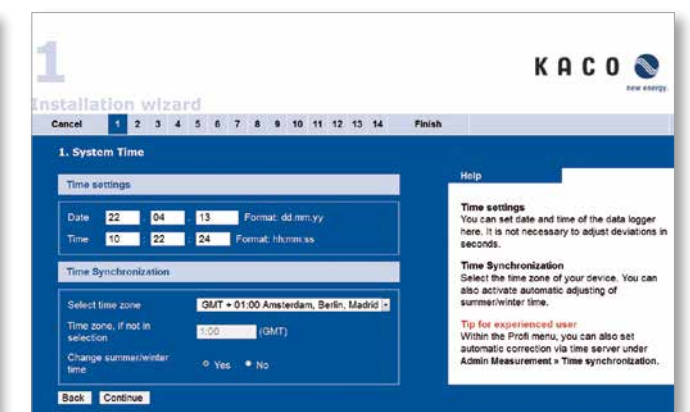


## Configuration | Online Values

Powador-proLOG web server



Expert page



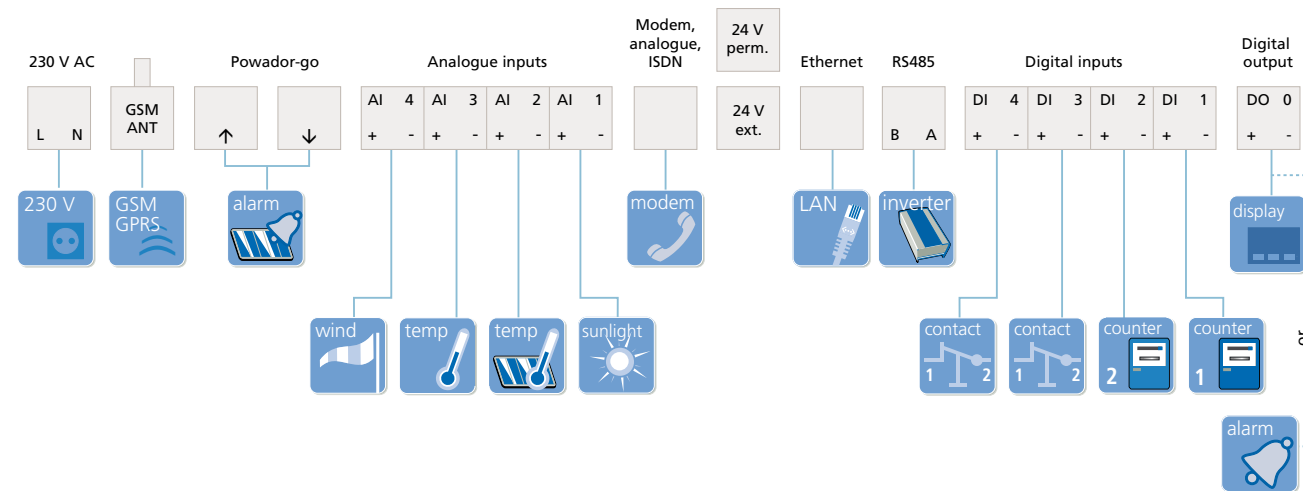
Installation wizard

## Alarm notification options of the Powador-proLOG

Variants	Direct Connection: PC to Powador-proLOG	Alarm Notification via	Special Feature
Ethernet	PC with network card	E-mail	You must be able to send e-mail messages over the network.
Analogue	PC with analogue modem	E-mail/SMS/Fax	
ISDN	PC with ISDN modem	E-mail/SMS	Connect to telephone system or directly to the SO interface (NTBA)
GSM / GPRS	PC with GSM modem	E-mail/SMS/Fax	GPRS data card available from Wireless Logic

# Powador-proLOG.

Connection Diagram.



## Overview of features for all models

Overview of Features	Powador-proLOG S	Powador-proLOG M	Powador-proLOG XL
Variants	1. Ethernet/DSL 2. Analogue	1. Ethernet/DSL	1. Ethernet/DSL 2. Analogue 3. ISDN 4. GSM / GPRS
Access to Powador proLOG data via	Ethernet Dial-up (modem) Compact Flash card reader (CF)	Ethernet Compact Flash card reader (CF)	Ethernet Dial-up (modem) Compact Flash card reader (CF)
Inverter interface	RS485	RS485	RS485
Number of inverters/ 25-33000xi and Park	31 (50 kWp)	31/10	31/10
Inverter address range	1 to 32	1 to 32	1 to 32
Number of Powador-go units that can be connected	100	100	100
Powador-go address range	0 to 99	0 to 99	0 to 99
Analogue inputs	1	1	4
Digital inputs	1	1	4
Alarm or SO output	1	1	1
Displays on unit	4 LEDs Display with 2 x 16 characters	4 LEDs Display with 2 x 16 characters	4 LEDs Display with 2 x 16 characters
Integrated power supply (230 V/24 V)	yes	yes	yes
Storage medium	Compact Flash: 128 MB	Compact Flash: 128 MB	Compact Flash: 128 MB
Saving interval	5 - 60 minutes	5 - 60 minutes	5 - 60 minutes
Software needed for configuration	Any web browser	Any web browser	Any web browser
Software for local evaluation	Powador-monitor	Powador-monitor	Powador-monitor
Remote evaluation and alarm notification	Powador-web	Powador-web	Powador-web

# Powador-protect.

Functional diagram of network and system protection.

